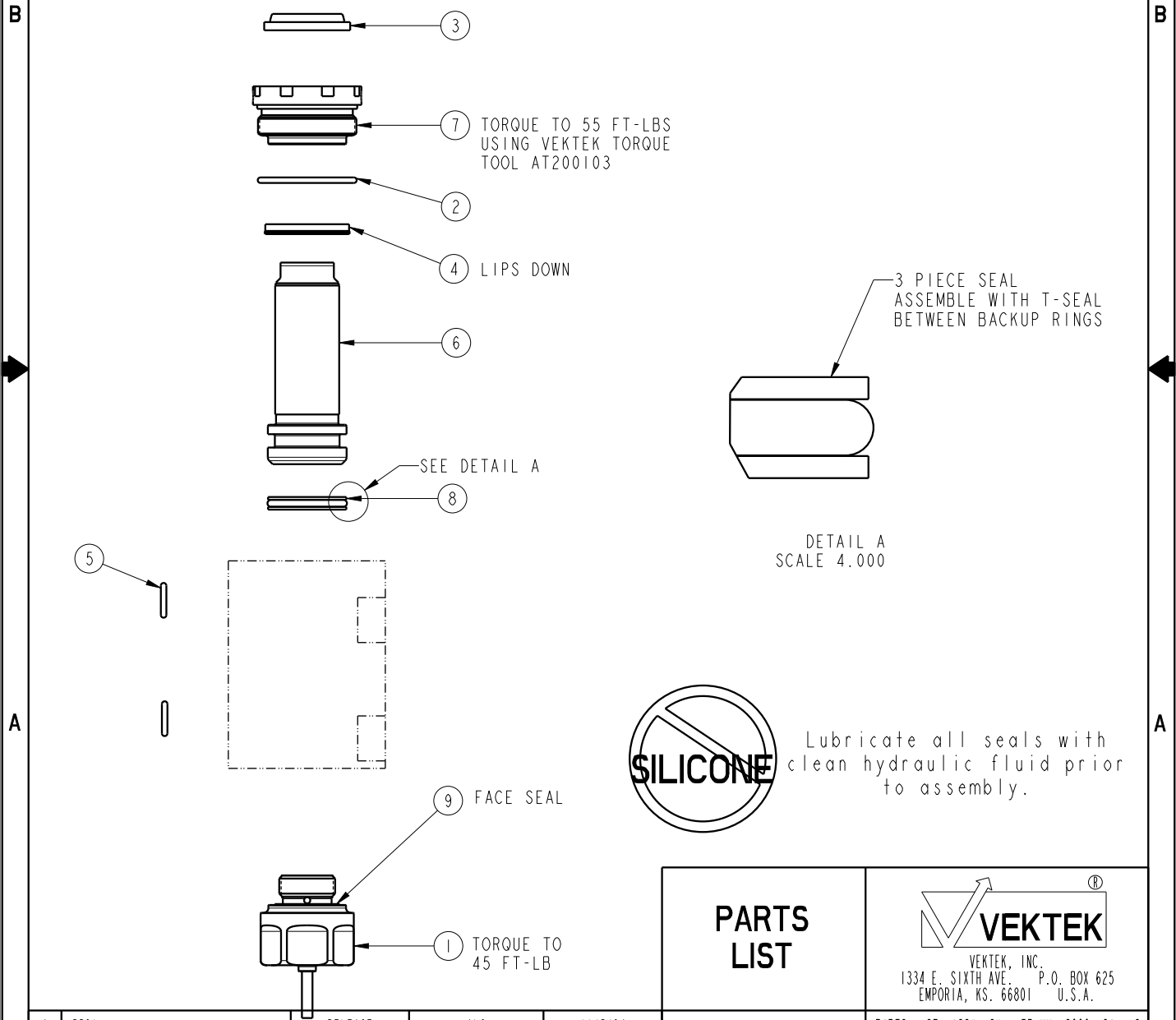


| NO. | QTY | DESCRIPTION | MODEL NUMBER | | | | STANDARD SEAL KIT | FKM SEAL KIT |
|-----|-----|----------------------------------|---------------|---------------|---------------|---------------|-------------------|--------------|
| | | | 21-1210-00-US | 21-1210-01-US | 21-1210-04-US | 21-1210-02-US | | |
| 1 | 1 | SENSOR, ULTRASONIC, M12, 1m | 29740200 | 29740200 | 29740200 | 29740200 | | |
| 2 | 1 | O-RING, (-024) | 39001011 | 39001011 | 39001011 | 39001011 | X | 39012013 |
| 3 | 1 | WIPER, SNAP-IN, (13/16) | 39012008 | 39012008 | 39012008 | 39012008 | X | X |
| 4 | 1 | SEAL, LL, (13/16X1/8X1/8X1-1/16) | 39011045 | 39011045 | 39011045 | 39011045 | X | 39012005 |
| 5 | 1 | O-RING, (-011) | 39050042 | 39050042 | 39050042 | 39050042 | X | 39051025 |
| 6 | 1 | PISTON, CYL, 3900, US | 82011010 | 82011011 | 82011012 | 82011013 | | |
| 7 | 1 | GLAND, CYL, 3900 & 17.8 kN | 82031002 | 82031002 | 82031002 | 82031002 | | |
| 8 | 1 | SEAL, T, (13/16 X 5/32 X 1) | 39H10017 | 39H10017 | 39H10017 | 39H10017 | X | 39V10017 |
| 9 | 1 | SENSOR, FACE SEAL | 43000040 | 43000040 | 43000040 | 43000040 | | |
| | 1 | SENSOR, FACE SEAL, FKM | 43000041 | 43000041 | 43000041 | 43000041 | | |
| N/A | N/A | SEAL KIT, STANDARD | 60210200 | 60210000 | 60210200 | 60210200 | NOTED | |
| N/A | N/A | SEAL KIT, FKM | 6V210210 | 6V210210 | 6V210210 | 6V210210 | | NOTED |



| | | |
|---------------|--|---|
| PARTS LIST | VEKTEK, INC. 1334 E. SIXTH AVE. P.O. BOX 625 EMPORIA, KS. 66801 U.S.A. | |
| | ASSEMBLIES AFFECTED | PARTS LIST, ASSY, CYL, BB, MM, 3900, DA, US |
| REV | IN ACCORDANCE WITH ECN | EFFECTIVE DATE |
| DATE: 10/8/24 | DRAWING STATUS: Released | |
| SIZE A | PL21010 | REV A |

| | | | | |
|--|---------------------------------|----------------|------------|---------|
| A | 5531 | RELEASE | ALS | 11/5/24 |
| REV | IN ACCORDANCE WITH ECN | EFFECTIVE DATE | REVISED BY | DATE |
| DATE: 10/8/24 | DRAWING STATUS: Released | | | |
| PRODUCTION APPROVED FOR RELEASED STATUS ONLY | | | | |

FORM FEG035_PL_ASIZE, REV. B

SHEET 1 OF 1